



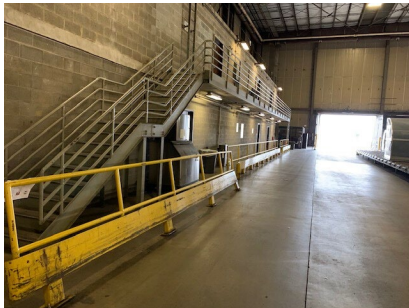
Case Study: Strength and Dual Function

Customer

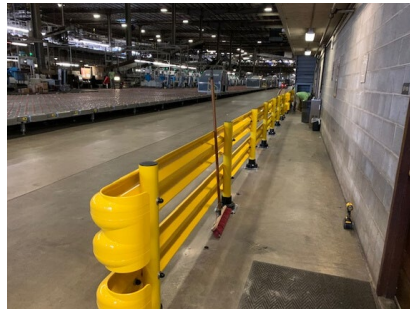
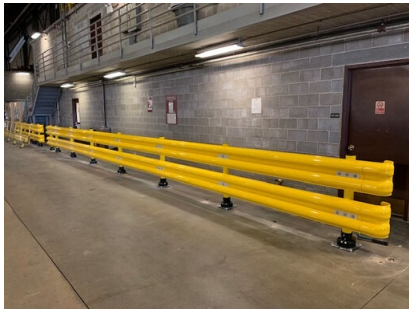
UPS Gateway Facility, Philadelphia Airport (PHL)

Situation

The nature of the gateway operation requires a lower guardrail profile to protect areas from tugs and dollies which can be much lower to the ground than a feeder, forklift, or package car. These different scenarios require protection at multiple points. Previous attempts to provide a protective guardrail failed to withstand vehicle impacts without breaking, bending or completely losing their integrity.



Before



After

Solution

In order to resolve the issues, the gateway facility was experiencing the SlowStop® 4" FlexRail Double Guardrail system was installed. The before and after images represent the improvements made to the facility but Andy Patrick, UPS Facility Engineer says it best, "This product has solved a major problem we have experienced in our facility for a long time. The elevation of the single rail is too high, but the double rail acts as a handrail and a guardrail all in one package to offer superior asset protection."