

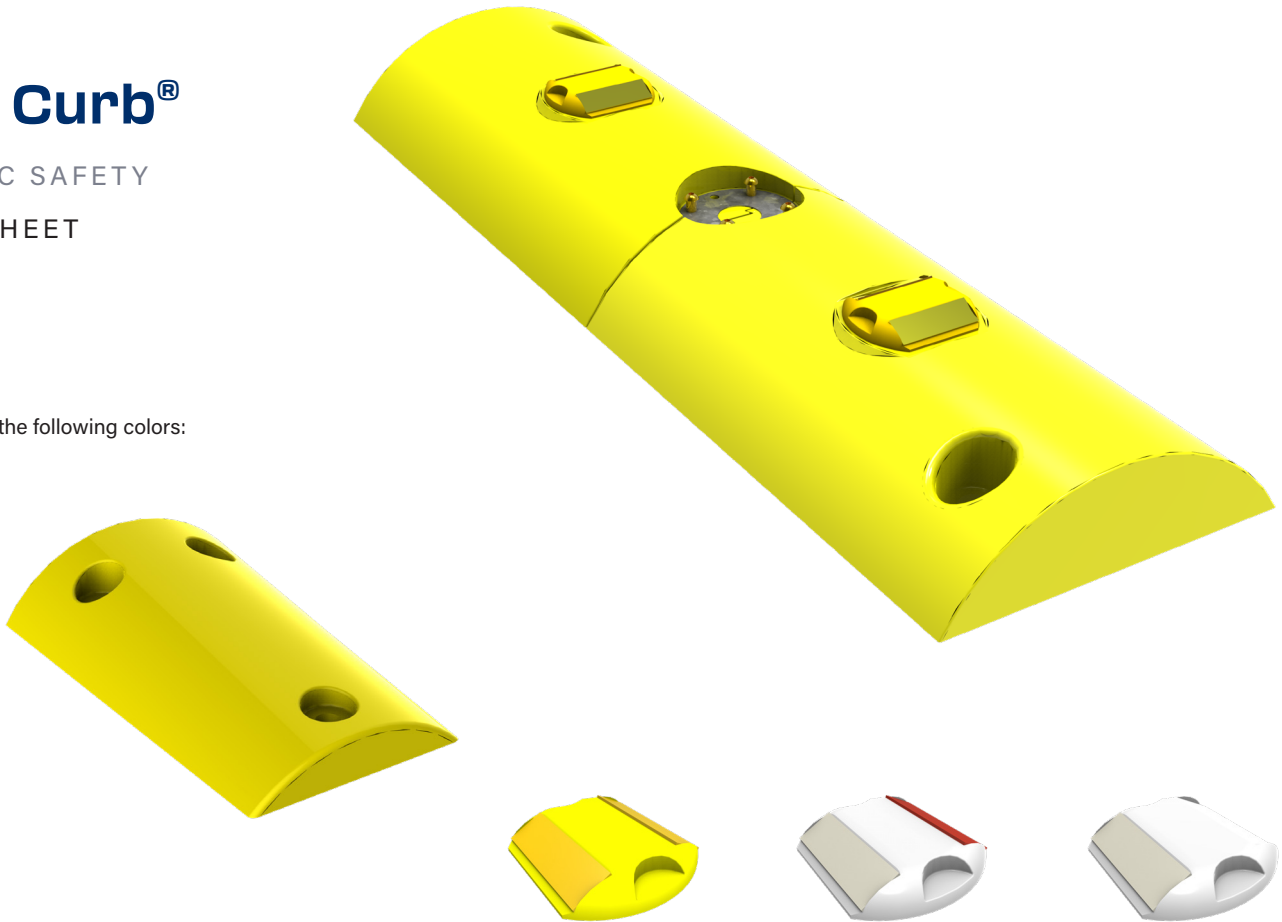
Tuff Curb®

TRAFFIC SAFETY

SPEC SHEET

P/N TC

Available in the following colors:



Product Specifications

Socket Type	Fixed or Quick Release
Material	Injection-molded polyethylene
Dimensions	40" x 12" x 3.5"; 12 lbs.
Hardware	Fixed - stainless steel socket cap, screws and Ultra Sta-Coat T-Nuts; Quick Release - zinc chromate shoulder bolts
Curb Color	White, Yellow (integral colorization)
Reflectors	Raised pavement markers match color of curb
Reflective Sheet Color	Yellow/yellow, white/red, white/blank
Installation	Two anchors (included)
Compatibility	Fixed, Quick Release uprights

Recommended Uses

Ideal for use curves, medians, edge lines, work zones, rail crossings, toll booths

Use with Impact Recovery posts or signs attached

4955 Stout Drive, San Antonio, TX 78219
(210) 736-4477 | 1-800-736-5256 | info@impactrecovery.com

impactrecovery.com

January 2024



©2024 Impact Recovery Systems, Inc.® All rights reserved. Impact Recovery Systems, OneBase, and Tuff Curb are registered trademarks of Impact Recovery Systems, Inc.® SlowStop® is a registered trademark of SlowStop Guarding Systems, LLC.®

The products mentioned in this document are covered by the following U.S. and international patent numbers: 7,195,422 | 7,621,691 | D937,700 | D620,823 | D620,824 | D620,825 | EP 2 267 225 | EP 2 888 412 | 9,938,677 | 11,136,735 | D932,875. Other U.S. and International patents pending.