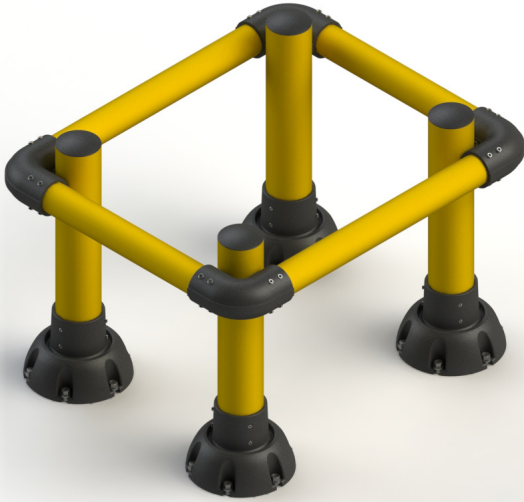




IronFlex Column Protectors Type 2.5

PROTECTIVE GUARDING - SLOWSTOP®

SPEC SHEET | P/N **SS-T2.5Y-XX-CP**



Product Specifications

Color	RAL 1023 Yellow Pipe on RAL 9005 Black Pedestal
Temperature Rating	-40°C - 70°C
Pipe Coating	EN-ISO 1461 Galvanized + Polyester Powder Coating
Cast-Iron Coating	Environmentally Friendly Water-based E-Coat + Polyester Outdoor Powder Coating
Cap	Black Plastic
Impact Rating	54.400 joules/400kN
Anchors	(24) M16x140 concrete

Recommended Uses

Protects from impact to building structures

Impact Chart

Impact Angle	90°	45°	30°
Rating (joules)	54.400	108.833 calculated	217.600 calculated
Mass (kg)	Speed (kph)	Speed (kph)	Speed (kph)
4,000	18.8	26.6	37.6
6,000	15.3	21.7	30.7
8,000	13.3	18.8	26.6
10,000	11.9	16.8	23.7
12,500	10.6	15.0	21.2
15,000	9.7	13.7	19.4
17,500	9.0	12.7	18.0
20,000	8.4	11.9	16.8
25,000	7.5	10.6	15.0

4955 Stout Drive, San Antonio, TX 78219
(210) 736-4477 | 1-800-736-5256 | info@impactrecovery.com

impactrecovery.com

January 2024



©2024 Impact Recovery Systems, Inc.® All rights reserved. Impact Recovery Systems, OneBase, and Tuff Curb are registered trademarks of Impact Recovery Systems, Inc.® SlowStop® is a registered trademark of SlowStop Guarding Systems, LLC.®

The products mentioned in this document are covered by the following U.S. and international patent numbers: 7,195,422 | 7,621,691 | D937,700 | D620,823 | D620,824 | D620,825 | EP 2 267 225 | EP 2 888 412 | 9,938,677 | 11,136,735 | D932,875. Other U.S. and International patents pending.